

Autumn/Winter 2018

Your borough **YOUR HOME**

News and information for Dudley borough residents



FORGING
A FUTURE FOR ALL

Dudley
Metropolitan Borough Council

DUDLEY BOROUGH
A GREAT PLACE TO CALL HOME

IN DUDLEY BOROUGH
www.dudleyboroughvision2030.org.uk



Affordable Loans Secure Savings

For residents and workers of
Dudley Borough & Worcestershire

Get a loan decision in minutes!

- ✓ Quick & easy to apply
- ✓ No early repayment penalties
- ✓ Same-day payment*
- ✓ No hidden fees



Castle & Crystal
Credit Union

01384 815771

www.castleandcrystal.co.uk

25 New Street | Dudley | DY1 1LT

Protecting your money



*Subject to receipt of signed loan agreement by 2.30pm (Monday to Friday).

Credit subject to status – terms and conditions apply. Authorised and regulated by the Financial Conduct Authority and the Prudential Regulation Authority.

Welcome to the first edition of **Your borough YOUR HOME**



As Leader of Dudley Council, I am delighted to welcome you to the first issue of Your Borough, Your Home.

Dudley borough is a great place to call home and in this edition we have exciting updates on the new borough vision, Forging a Future for all.

As the historic capital of the Black Country we are rightly proud of our past and, as we approach the 100th anniversary of the First World War, we are also very proud of our armed forces. In this edition, we've got news about how the borough is preparing to commemorate this hugely significant anniversary, including a respectful commemoration to celebrate our armed forces heroes at this year's Himley Bonfire.

For our council house tenants and leaseholders there is also a four-page Home Affairs supplement and elsewhere in the magazine, you'll find the latest news and information on other key council services available to all residents across the borough, as well as contact details for all of your local councillors.

Councillor Pete Lowe

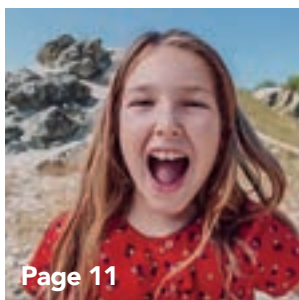
Leader of Dudley Council

In this issue...



Page 8

Royal visit to Stourbridge



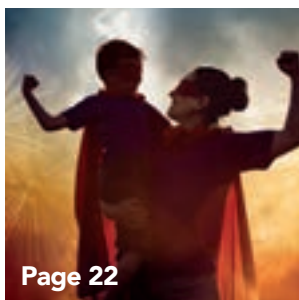
Page 11

New Discover Dudley video



Centre pull-out

Home Affairs



Page 22

What's on

Bonfire night is one to beat

An exhilarating bonfire event that packs a musical punch is set to thrill the crowds at Himley Hall and Park on Saturday 3 November.

Organisers of the family friendly event, now in its 43rd year, are overhauling Dudley Council's famous fireworks show to give it an explosive edge.

Incorporating the very latest technologies in the pyrotechnic industry, the illuminations will dance to a show-stopping soundtrack.

Hero themed, the evening will feature a moving and thought provoking tribute to people who have fallen in conflict as a respectful commemoration marking 100 years since the end of World War I. It will also celebrate heroes and heroines from the world of entertainment and sport as well as everyday people who are remarkable in their own way.

Here are some amazing fast facts:

- 10 pyrotechnic specialists from Midlands based Komodo Fireworks will electronically control the show
- More than five weeks of work will go into preparing the fireworks for the 25-minute display
- Over the past 18 years a whopping 400,000 people have attended the bonfire, 45 times the capacity of Wembley Stadium
- 20 tonnes of pallets have gone into the bonfires over the last 43 years
- More than 100 steel racks are being produced especially for this year's event and a 7.5-tonne truck will be needed to bring all the necessary equipment on site

The advanced online ticketing means people can take advantage of up to a 20% discount off the gate price. Online: standard adult £10, standard child and senior citizen £5.50, family (two adults, two children) £24.

For the first time ever the event will have a premium viewing area on the South Lawns. In addition, also for the first time, there will be a night market as well as a giant funfair, Heart 100.7 roadshow, live entertainment and seasonal refreshments.

Gates open at 4.30pm, bonfire lit at 7.45pm and a 25-minute fireworks display is at 8.30pm. Full details at www.himleyhallandpark.co.uk/bonfire or facebook @HimleyHall



A GREAT PLACE TO CALL

#HOME

FOR OVER A THOUSAND YEARS

FORGING
A FUTURE FOR ALL

IN DUDLEY BOROUGH

www.dudleyboroughvision2030.org.uk

#HOME TO OUR SEVEN ASPIRATIONS



DUDLEY 2030

Internationally known attractions that give Dudley a clear identity
Protected heritage which is affordable for people to enjoy
Attractive with a rich industrial, historical and geological focus

Regenerated town centres where people are proud to live, work, shop and spend leisure time
Increased footfall in town centres
Town centres have a diverse cultural offer and thriving faith communities

A dramatically improved public transport system and more people walking and cycling
Reduced levels of congestion; accessible and affordable transport network
Improved access to the motorway network

Quality industrial, retail and commercial premises as well as a range of new sites
Fostering innovation and providing access to funding
Attractive career prospects for the workforce

Schools and colleges perform above the national standard
Young people have high aspirations and prospects, continually developing new skills
Businesses invest in skills of staff

Improved health outcomes and higher wellbeing
Continuing low levels of crime and disorder
Connected, empowered people making things happen in their communities

Connected green spaces linking parks, nature reserves and waterways
Accessible to all and enjoyed by all
Strong affinity to local centres that supports health, wellbeing and prosperity

BOLD BOROUGH VISION IS LAUNCHED

A major initiative to boost transport links, create vibrant town centres and help businesses grow across Dudley borough has been launched.



The community-led vision has been unveiled and it outlines ambitious plans for the next 12 years in creating a thriving borough where people want to live, work and visit. The proposals were outlined at Intu Merry Hill this month and featured a driverless pod manufactured by Pensnett-based Westfield.

Transport is one of the key features of the vision for the future of the borough as it prepares to welcome the multi-million pound Midland Metro extension from Wednesbury to Brierley Hill, as well as creating an innovation centre to develop a very light rail system. It is one of

seven aspirations for the future of the borough, along with education and skills, prosperous businesses, thriving town centres, safer and healthier communities, tourism and the environment.

Dudley Council is playing a key part in the proposals as well as local NHS organisations, the police, the fire and rescue service, colleges, tourist attractions, businesses, faith leaders and many more. A working group featuring key people and organisations from across the borough has now been tasked with drawing up detailed plans on how to achieve these aims by 2030.

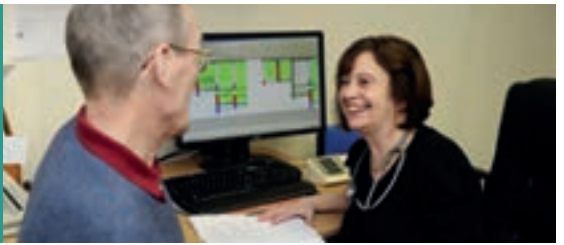
The proposals have received cross-party support at Dudley Council. *Councillor Pete Lowe, leader of Dudley Council, said:* "This is a community wide vision. No single organisation can make the difference that partners and the public want to see in the borough, so organisations are committed to working together for a better future. Clearly the council's role is very important in this in helping to bring investment to key areas, as well as bringing the right people together to make this happen. This really feels like the start of something very big and exciting, recognising our proud past but forging an exciting future for all."



For more information visit www.dudleyboroughvision2030.org.uk



OF HEALTH AND CARE IN DUDLEY



Local people have told health and care leaders that they want improvements to the access, continuity and coordination of their care. In response, Dudley CCG and Dudley Council have been changing the way that services are organised and are currently procuring a new NHS organisation, Dudley MCP.



Dudley is leading the way nationally on developing new ways of working and through this work with partners, we are already seeing improvements to the way community services are being delivered. The procurement of a new organisation should cement these new ways of working for years to come through improved, joined up working between our GPs and the wider health and care teams such as community nurses, social workers, mental health workers and the voluntary sector.

The new MCP is set to provide integrated GP and community health and care services from autumn 2019. The MCP will have a longer term (10 to 15 years) contract rather than the usual shorter term health contracts, something which health chief Paul Maubach says is key to securing the long term health and wellbeing of the Dudley population.

Paul Maubach, chief executive, Dudley CCG, said: "In particular we can see real scope for tackling some of the bigger population health issues such as childhood

obesity and ultimately improving the life expectancy of Dudley people."

Councillor Cathryn Bayton, Dudley Council's cabinet member for health and wellbeing, said: "This new way of working will have primary care at its heart, and is very much looking at how we can develop services to improve the health of all our residents and prevent people needing long-term medical intervention or hospital admittance."

Sarah Norman, chief executive Dudley Council, said: "The support from the CCG and the council for an MCP in Dudley is an important milestone for Dudley borough as it takes us closer to integrated health and social care services."

Dr Gillian Love, Dr Steve Pritchard, local GPs and chairs of the GP Steering Group, said: "This will enable patients to be treated in a more coordinated way, being seen by the right professional in the right place at the right time for their personal health care needs."



There are a number of steps to take before the MCP can be created, but this is really positive news for the future of health and care in the borough. Find out more about the MCP by visiting www.dudleyccg.nhs.uk/dudleymcp

DRAWING ON SIR ROBERT PEEL'S PRINCIPLES IN 21ST CENTURY POLICING



Economic challenges, shifting demographics, rising citizen expectations, rapid technological advances and the arrival of the internet as a social space requires us to change the way in which we all work. Policing like every other organisation is working hard to transform what we do and how we do it.

Our contribution to the wellbeing of society, our communities and citizens is best summed up by our relentless focus on *preventing crime, protecting the public and helping those in need*. The challenge we are relentlessly grappling with across West Midlands Police is ensuring we prioritise the imperative to respond to people who need our policing help now, balanced with work with partners and citizens to prevent crime and harm and reduce demand over time. We prioritise our operational work with a relentless focus

on **OFFENDERS** (arresting and bringing to justice those who cause harm and misery to victims and our communities; working with partners to prevent offending and resettle and rehabilitate those who have offended) and protecting the most **VULNERABLE PEOPLE** from harm. We therefore play a pivotal role in helping forge *healthy, resilient and safe communities* across our borough.

Sally Bournier, chief superintendent, Dudley Neighbourhood Policing Unit Commander, said: "I am proud to lead your neighbourhood teams who are the foundation of the work taking place across Dudley borough. Their primary purpose is to work with communities and partners to prevent crime and demand by building relationships with local people who are the eyes and ears across our communities. This reflects one of the principles upon which British policing was founded by Sir Robert Peel in 1829 when he

said the police are the public and the public are the police."

Help us to help you by only using *999 in an emergency (life at risk/serious injury or crime is happening now AND offenders are present/nearby)*.

For non-emergency policing matters visit WMPolice Online (including live chat) www.west-midlands.police.uk or call 101. To stay updated on what is happening in your local community sign up for neighbourhood policing alerts at www.wmnow.co.uk

For a magical Christmas shop at Brierley Hill Market Hall

High Street
Brierley Hill
West
Midlands
DYS 3AP

Love your local market

For Christmas fayre and gifts for all

Café, Scented Candles, Butchers, Deli,
Bread & Cakes, Fruit & Veg, Pet Products, Key Cutting & Shoe
Repairs, Flowers, Plants, Sweets & Biscuits, Ironmongers,
Jewellery, Watches, Bags, Mens & Ladies Fashions, Workwear,
Rugs, Wool, Footwear & Lingerie, Clothing Repairs &
Alterations, Card & Balloons, Giftware, Lighting, DVDs, Videos &
Computer Games, Toys, Books, Curtains & Nets, Candles,
Haberdashery, Electrical Items, Collectibles, E-Cigs & Vapes and
so much more

FULL MARKET OPEN
TUESDAY, THURSDAY, FRIDAY & SATURDAY
(MONDAY & WEDNESDAY - FRONT ONLY)

Find us on facebook



DUDLEY & SOUTH STAFFS CAMRA PRESENTS

DUDLEY



ABRAHAM DARBY

WINTER ALES FAYRE 2018

Dudley Town Hall, St James's Road, Dudley DY1 1HP

Thursday 29 November 5.30-11pm • Friday 30 November 12noon-11pm

Saturday 1 December 12noon-11pm or when the beer runs out

70+ Traditional Real Ales

Cider • Foreign Beer • Wine • Hot & Cold Food

Live Entertainment Friday and Saturday Quiet Night on Thursday

Admission charges apply
(including glass and tokens - refundable)



Over 18s only
will be admitted
on Thursday
and Friday



For more information
or to volunteer to help
at the event please visit
www.dudley.camra.org.uk



CAMPAIGN
FOR
REAL ALE

Follow us on Twitter @DudleyCAMRA

CARING FOR OUR CUSTOMERS

We know that you might have a medical conditions or other circumstances, which means you need extra help or support with your account or if there's an issue with your water supply. We're here to help you when you need it most.

Would you or someone you know benefit from the following support?

- Alternative format bill
- Assistance for mobility needs
- Password protection scheme
- Nominee scheme
- Emergency bottled water supply

How to register or get in touch:



Apply online at: stwater.co.uk/priority



Send us an email at:
customer care@severntrent.co.uk



Call us on: 0345 7 500 500
Textphone: 0800 328 1155

WONDERFUL ON TAP





CHANGING ROOMS
IMPROVING AND MAINTAINING YOUR HOME
Bathrooms • Kitchens • Home Improvements

Is bathing becoming difficult?



Let us make life easier...

Wet Room Specialists & Easy Access Bathing Solutions

Tel: 01902 670426
Email: enquiries@changingrooms.org.uk
47a Kent Street, Upper Gornal, Dudley DY3 1UU

HOW ARE YOU GETTING HOME TONIGHT?



DOWNLOAD OUR APP NOW!

**ENSURE YOU GET HOME SAFELY!
ALWAYS PRE-BOOK A PRIVATE HIRE CAR**

- DO NOT GET INTO A CAR UNLESS YOU HAVE BOOKED IT WITH A LICENSED OPERATOR
- IF YOU FLAG DOWN A CAR, YOU ARE NOT INSURED & THERE IS NO RECORD OF YOUR JOURNEY
- REPUTABLE TAXI FIRMS USE A TRACKING SYSTEM SO THEY KNOW WHERE YOUR CAR IS AT ALL TIMES
- WE WILL ALSO SEND YOU A TEXT WITH THE COLOUR, MODEL & REGISTRATION OF YOUR CAR SO YOU KNOW YOU ARE GETTING INTO THE RIGHT CAR

TO PRE-BOOK A CAR THROUGH TRIPLE 20 SIMPLY CALL OUR BOOKING LINE NOW ON 01384 202020

202020 TRIPLE TWENTY
CARS OPERATE 24 HOURS A DAY




Children aged 2 or 3, pregnant women, people with long-term health conditions and those aged 65 or older should get their free flu vaccine



HELP US HELP YOU
STAY WELL THIS WINTER

Richard Pile, GP

Prince William unveils statue of Stourbridge hero Frank Foley

Thousands of borough residents turned out to welcome The Duke of Cambridge to Mary Stevens Park when he visited to unveil a statue honouring a Stourbridge man who saved more than 10,000 Jews from the Holocaust.



Major Frank Foley CMG - dubbed the British Schindler - was an MI6 agent based in Berlin working undercover as a passport control officer. He provided visas and passports to help Jews escape before the Second World War, hid many in his own home and even went into concentration camps to rescue people.

After retiring, he lived in Eveson Road, Stourbridge until his death in 1958.

The life-size bronze statue features Major Foley sitting on a park bench feeding a bird perched on his case, symbolising the people he helped and his MI6 work.

Prince William met members of Major Foley's family and descendants of some of the people he saved.



Dudley remembers

As Dudley prepares to remember those who lost their lives in war at next month's Remembrance Sunday service, a special tribute will be made to mark the centenary of Armistice.

On empty chairs sitting amongst the veterans will be a number of silhouettes, a poignant reminder and mark of respect to those who didn't return from the Great War of 1914 to 1918.

The transparent silhouettes are part of the national 'There but not There' campaign and will be used at events across the country on Sunday November 11, exactly 100 years since the First World War ended.

Councillor Alan Taylor, the Mayor of Dudley, said: "Each year we pay our respects to all armed forces personnel who have lost their lives in war but this year we will pay special tribute to those who gave the ultimate sacrifice 100 years ago."

Dudley's Remembrance service will take place at the cenotaph in Ednam Road from 10.40am with a two minutes silence at 11am.

Beforehand, veterans will be joined by servicemen and women and community groups in a parade from Vicar Street starting at around 10.15am. It will move along High Street, Stone Street, Priory Street and Priory Road before finishing in Ednam Road by the cenotaph. Uniformed organisations will meet in Vicar Street from 10am.

Community-led services will also be held across the borough, including Halesowen and Stourbridge. People can contact their local Royal British Legion branch for details.

Other events to commemorate the anniversary will take place in November, including a Gentleman Songsters concert titled 'Dudley Remembers' on Thursday November 8.

Further details available at www.gsmvc.org.uk

There will also be a SSAFA theatre production called 'Time to Remember' at Stourbridge Town Hall on Friday November 2. Go to www.boroughhalls.co.uk for tickets and more information.

For information about life in Dudley during World War One go to www.dudley.gov.uk

Council initiatives putting people first

Weekly bin collections and free parking will all be protected under the new leader and cabinet at Dudley Council.

Councillor Pete Lowe, the new leader of the council, said there was lots to do after he took control of the council last month (September).

Revitalising town centres, maintaining weekly bin collections and offering free parking in town centres are just three of the measures the leader is focussing on.

Councillor Lowe also said it was people who were the driving force in the approach, especially in the run up to "budget season".

He said there would be more focus on partnership working and reinforcing a sense of pride in the borough as a home. Councillor Lowe said the council's strong role in the Dudley borough Vision would be particularly important in achieving the authority's ambitions.

Councillor Pete Lowe, leader of Dudley Council, said:

"We have made it clear we are looking at extending free parking in town centres as well as protecting weekly bin collections. These are things that are important to people and we have to put people first.

"We are entering budget season when we will be making some difficult decisions, but we have to remain focussed and work with partners to continue running high quality services. Getting a fair deal for Dudley is essential to make sure we have adequate funding to provide quality services for people and will be campaigning for this fair deal.

"There are many more initiatives in the pipeline that need to go through the proper channels, but rest assured, we will always put people at the heart of every decision we make as we forge a future for all."

For more information visit www.dudley.gov.uk

WIN tickets for a trip back in time

If you have ever wanted to take a trip back in time to see what life was like millions of years ago - we can help.

We've got a family ticket (two adults and three children) for Dudley Canal & Tunnel Trust to give away, where you can experience an underground journey by boat through the stunning limestone caverns beneath Dudley to see what lived here millions of years ago.

To be in with a chance of winning the family pass, all you have to do is sign up to our e-bulletin - a monthly email newsletter packed full of useful information, from things to do with the family to how we spend your money. Email us at councilbulletins@dudley.gov.uk and use the word HOME as the subject. Closing date is December 1 after which we'll choose a winner at random.



Ofsted progress

Progress continues to be made in improving services for vulnerable children and young people in Dudley, according to Ofsted.

Dudley Council has received feedback from the government watchdog following a recent monitoring visit.

The letter says inspectors "did not see any children or young people at risk of significant harm" during their visit.

The visit by inspectors was the seventh to have taken place since the council's children's services were rated inadequate by Ofsted in April 2016.

It was the council's final monitoring inspection by Ofsted, with a full inspection due to take place during October.

Councillor Sue Ridley, cabinet member for children's services, said:

"There should be no doubt that since the inspection in 2016, we have worked extremely hard to make real changes. We are determined this will be reflected during the full inspection by Ofsted later this year."



Freedom of the borough

Scores of people lined the streets to see RAF Cosford receive the Freedom of Dudley borough at a special event in the town.

A special ceremony took place on the steps of the Council House in Dudley where the Mayor of Dudley, Councillor Alan Taylor, officially presented the freedom scroll to Group Captain Tone Baker OBE, Station Commander of RAF Cosford.

A parade, also featuring RAF veterans and local cadet groups, then paraded through the town to a special service at Top Church commemorating those who risked all in the skies above the UK against the German Luftwaffe during the Battle of Britain.

Councillor Alan Taylor, Mayor of Dudley, said:

"We are proud of our strong links with the armed forces and delighted that RAF Cosford accepted the honour of Freedom of the borough of Dudley."

The event was organised in partnership between Dudley Council and Dudley Royal Air Forces Association (RAFA).

Simply Confident... Simply Natural...



Simply Dentures
Creating beauty in every smile



Do you struggle with problem dentures? Come direct to the manufacturer and discuss the issues you have with your teeth with our Clinical Dental Technician
Mr Peter Brookes DipCDT
GDC registered no. 124429

June came to us for an emergency denture repair before we began to make her new smile

What our patients say...

"After seeing adverts in the local paper & being in need of new dentures I decided to try Simply Dentures and have not regretted it. A really good decision" - Mrs M. Norton

"Very pleased with the service and the dentures. If you need new dentures this is the place to come." - Mrs M. Davies



For more information or free consultation call us on **01902 664634**



16-17 Roseville Precinct, Castle St
Coseley, WV14 9EP
www.simplydentures.net



Your voice can improve NHS & care services

Got something to say...
...about your GP, hospital, pharmacy, dentist, optician, mental health service, or a local care home?

Share your experience
at the weekly Healthwatch Dudley drop-in every Friday 9.30am to midday for a friendly chat in confidence.

DY1 Community Building
Stafford Street Dudley DY1 1RT

We are independent and local - Your views can make a difference!

03000 111 001
(Calls charged at local rate)
email hello@healthwatchdudley.co.uk
or tweet us @HWDudley

Good or bad we want to hear



Thrive into Work

Do you have a health condition and would like support to find work?

The **Thrive into Work** programme is an experimental trial, testing a new employment support service for people with a health condition. The trial aims to find out how good this new service is at helping people to find work.



What is the service we are testing?

- One-to-one support to suit your needs and employment goals
- Working with your health care team to help you manage any difficulties
- Benefits advice to find out if work could increase your income
- Help with finding a job if you are not in paid employment, and continued support once you have started
- Help talking to your employer about your needs at work
- Meetings over the phone or in person at a location that is convenient for you.

Who is the trial for?

- People with a mental health and/or physical health condition
- People who are out of work and want to work
- People registered with a GP in Wolverhampton, Dudley, Sandwell and West Birmingham or South Central Birmingham
- People aged 18+ at the time of referral.

How does the trial work?

The Thrive into Work programme is a randomised control trial, meaning people who take part will be randomly placed into two groups. One group will receive the new service and the other group will be provided with information about existing services in their area.

How to get involved?

Speak to your GP or local health professional
Visit www.thriveintowork.org.uk
Email us dwmh.thriveemploymentservice@nhs.net
Call us on 01384 324645






Choose your vitamins wisely

Residents are being warned to be on their guard against online vitamin scams.

Dudley Council's scam unit, managed by trading standards, is currently investigating a number of cases where local people have been duped into buying an unnecessary supply of vitamins online or over the phone. In one case, 11 different companies targeted a victim and over a three-year period they paid in excess of £8,000 for a large quantity of vitamin tablets they would never be able to use.



Green Flags for borough parks

Six parks and nature reserves in the Dudley borough have proved they are a cut above the rest by obtaining Green Flag status from environmental charity Keep Britain Tidy.

Priory Park, Buffery Park and Wren's Nest National Nature Reserve in Dudley; Mary Stevens Park in Stourbridge; Leasowes Park in Halesowen and Silver Jubilee Park in Coseley have all received the Green Flag Award which recognises the space boasts the highest possible standards, is beautifully maintained and has excellent facilities.

Bright sparks

Nearly one third of the borough's street lamps have been converted to LED bulbs, making them more energy efficient and saving the council, and council tax-payer, money.

Around 2,000 street lights on main roads in the borough have now been converted, which is more than 30 per cent of the total work. Council bosses are aiming to replace every street light by 2020. Once complete, the project will reduce peak demand by 100KW, the equivalent of around 800 kettles continuously boiling.

Protecting our green spaces

A recent Public Space Protection Order has banned quad bikes, motorbikes and other unauthorised vehicles in some of the borough's green spaces.

The order will give police officers and authorised council officers the power to issue fixed penalty notices of up to £100 to those caught using an unauthorised vehicle on Fens Pool Nature Reserve, Mullet Park, Barrow Hill Nature Reserve, green space in Russells Hall, Buckpool Nature Reserve, Woodside Park, Marsh Park, and green space open to the public at Milking Bank, Pensnett Technical College, Lapwood Avenue/Ketley Fields, and Pheasant Street. Failure to pay could see fines escalate up to £1,000

Discover Dudley

A new two-minute film promoting all that's great about the borough was released over the summer and has gone down a storm on social media.

The Discover Dudley short promotes a host of Dudley's top attractions including Dudley Zoo, Black Country Living Museum, Intu Merry Hill as well as our wonderful parks, canals and green spaces. It's a great reminder of all that the borough has to offer, both to proud locals and visitors who make more than five million day trips to our borough each year, contributing £117m to the local economy. You can view the full video at the council's Youtube channel.



AVOID THE MISERY OF FLU

get your flu jab at your local pharmacy



Search 'Dudley flujab' or scan



GET A FLU JAB BEFORE IT'S TOO LATE

FREE for eligible patients



in partnership with



JOB VACANCIES

citizens advice Dudley Borough

- MONEY ADVICE CASEWORKER: 18.5 – 37hrs (FTE)
- TECHNICAL AND QUALITY SUPERVISOR: 37hrs (applications for 24hrs+ will be accepted)
- FINANCIAL CAPABILITY CASEWORKER: 18.5 – 37hrs (1.5FTE)
- GENERALIST ADVICE CASEWORKER: 18.5 – 37hrs (3FTE)
- BUSINESS SUPPORT ADMINISTRATOR: 15hrs

VOLUNTEER VACANCIES

We are also looking to increase our team of Volunteers and to expand how we deliver our service to residents of Dudley Borough:

- **Contact Centre Assessors** (telephone, email and webchat)
- **Information Hub Facilitators**
- **Generalist Advisers** (note minimum of 6 months Citizens Advice experience as a qualified assessor/gatewayer required)
- **Administrator/Business Support Worker**
- **Trustee** (will need to attend 5/6 meeting per year, time required: 4/5hrs per month)

*CLOSING DATE FOR VOLUNTEER APPLICATIONS:
FRIDAY 23 NOVEMBER 2018 at 4pm*
FOR PAID ROLES VARIOUS

Request application via advice@dudleycabx.org
(Please note CV's are not accepted)

www.citizensadvisedudley.org
or www.citizensadvice.org.uk



THE OLD BANK

- Affordable home cooked lunch/evening meals including Black Country classics from 11am - 6pm
- Home cooked Sunday lunches served 12noon - 6pm
- 8 local real ales
- Large selection of gin, spirits, lager and ciders
- Xmas menu available to book from 26th Nov - 24th Dec
- Xmas parties can be catered for
- Private space for up to 30 guests available to hire
- Live music on 1st Friday of the Month and DJ weekends
- Dog friendly (water and treat given)

Loyalty Cards available
Claim a **FREE** main meal!

Opening Hours
Monday-Thursday 11am-11pm
Friday and Saturday 11am-1am • Sunday 12noon-11pm

38 High Street | Stourbridge | DY8 1DA

01384 396079

Homeaffairs

News and views for council tenants and leaseholders throughout Dudley borough

Welcome to the latest edition of Home Affairs!

As cabinet member for housing services, I am delighted to welcome you to the first issue of Home Affairs as part of the council's new corporate magazine - Your Borough, Your Home.



We will continue to bring you the essential information for tenants and leaseholders in this four-page supplement.

Elsewhere in the magazine, you will find the latest news from other council services and information about campaigns that support all our residents across the borough.

Councillor Gaye Partridge

Cabinet member for housing

Home Affairs is available in large print and audio. To request a copy phone 01384 813400.

View the latest news for tenants and leaseholders at www.dudley.gov.uk/home-affairs

Struggling to pay your rent?

You're not alone. We've helped hundreds of tenants through the rocky times in life. Our officers can help you with debt advice, support and assistance to stay out of the red and stay in your home.

We can also put you in touch with organisations such as Citizens Advice for expert guidance on money management.

As an authority we have to take strong action against tenants who choose not to pay their rent. But if you're struggling, talk to us - we're here to help.

For more information contact the team on 01384 811689.



Rent account refunds

If your rent account falls into credit you can request a refund either online (www.dudley.gov.uk search 'paying your rent') or via Dudley Council Plus on 0300 555 2345.

Refunds may take up to 12 weeks to process due to checks being carried out. If there are any other outstanding debts these will be cleared before any refund is issued.

If the credit on an account is due to recently taking on a tenancy (July 2017 onwards), and this is from the payment made as part of the sign up, this credit will not be refunded and will remain on the account, as rent should be paid in advance and not in arrears, as per the tenancy conditions.

Council Housing Tenants Satisfaction Survey (STAR)

Four out of five council tenants - out of more than 3,000 who took part - are satisfied with their home.

To view a summary of the results visit www.dudley.gov.uk and search 'latest housing news'.

eHousing

Remember - wherever you are, whatever you're doing - keep track of your rent account with eHousing.

- view your rent account on line
- make a payment
- update your details

For more information visit: www.dudley.gov.uk and search eHousing



Fire safety... stay safe at Christmas!

Fairy lights, trees, decorations and cards are all fire risks at Christmas - but by following a few simple steps, it's easy to stay fire-safe over the festive period.

According to statistics from RoSPA (The Royal Society for the Prevention of Accidents) for 2011/12, candles caused around 1,000 fires across the UK resulting in nine deaths and 388 casualties. In the same year at Christmas time, fairy lights caused 20 fires, whilst trees, decorations and cards were responsible for 47 house fires.

To help you stay safe at Christmas we have created a fire safety information webpage which includes guidance for people living in flats with communal areas.

For more information visit www.dudley.gov.uk and search 'Fire safety at Christmas'.

Never forget your rent payment with Direct Debit

Direct Debit is the easy way to ensure that rent is paid on time. Council tenants can set up a Direct Debit to pay rent for home or garage, or to pay for contents insurance.

Payments for rent can be set up on any day of the month (1st to the 28th) to fit in with payday or Universal Credit payments. Rent arrears can also be paid via Direct Debit (subject to limits). Content insurance payments can be set up on any day between the 1st and the 6th of the month. Weekly Direct Debits can also be set up, paying on Fridays.

All tenants signing up for Direct Debit will also be entered into a monthly prize draw with a chance to win a £100 supermarket voucher.

To find out more or to set up your Direct Debit payment, call the team on 01384 815024.

Shopping at the heart of Stourbridge

Enjoy a fresh and bright shopping environment

THIS WEEK BEAUTIFULLY SIMPLE GUJARATI SWEET POTATO CURRY

Fry the peppers and onions until softened and golden.

Stir in the sweet potato chunks, coconut milk and Gujarati curry paste.

Cover and simmer, stirring occasionally, until the vegetables are very soft.

Season to taste and scatter with fresh coriander and almonds. Serve with pilau rice or warm naan bread.



RECIPe INGREDIENTS: 1kg Cooked Vegetables Organic Coconut Oil, 2 peppers (from each of sweet pepper, yellow and red), 1 onion, 1 sweet potato, 70g Cooked Vegetables Gujarati Paste, 400ml (or Cooked Vegetables Organic Coconut Milk), 1 x 30g pack coriander, 20g toasted sliced almonds.

DUDLEY COUNCIL

2018 - 2019



The Mayor of Dudley
Councillor Alan Taylor

Deputy Mayor
Councillor Hilary Bills

Dudley Council Plus

Weekdays 8.30am-5pm & Saturday 9am-noon

email individual councillors eg
cllr.peter.love@dudleymbc.org.uk

To report issues

www.dudley.gov.uk/report-it
dudleycouncilplus@dudley.gov.uk
0300 555 2345



Digi TV: Dudley Council

Dudley Council smartphone app

Latest news and information on social media



@DudleyMBC news and information
@DudleyPlus reporting and requesting



Facebook - Dudley borough

Political constitution of the council

Labour 36 seats
Conservative 35 seats
Independent 1 seat

Committee abbreviations

(ch)	chair
(v/ch)	vice chair
OSMB	overview and scrutiny management board
CSSC	children's services scrutiny committee
CSC	corporate scrutiny committee
HASCSC	health and adult social care scrutiny committee
PSC	place scrutiny committee
A&S	audit and standards committee
DC	development control
L&S	licensing and safety committee
Tax	taxis committee

1 Amblecote	2 Cradley & Wollescote	3 Ly...
 Paul Bradley Conservative 07812 435833 DC (v/ch), CSSC, Tax	 Julie Baines Labour 01384 936354 07931 533487 HASCSC, L&S	 Simon Tyler Conservative 01384 341631 07757 609798
 Tim Crumpton Labour 01384 826559 07853 243692 OSMB (ch)	 Gaye Partridge Labour 01384 898511 Cabinet	 Richard Body Labour 01384 894003 07951 482123 HASCSC, Tax
 Pete Lowe Labour Leader of the Council 01384 350579 07949 590460		
5 Hayley Green & Cradley South	6 Brierley Hill	7 B...
 Andrea Goddard Conservative 0121 602 0604 07425 894470 DC (ch), HASCSC, L&S	 Ruth Buttery Conservative 0300 555 2345 Shadow Cabinet	 Jeff Hill Conservative 07801 365733 CSC (ch), OSMB
 Zafar Islam Labour 01384 256599 07712 189767 PSC	 Serena Craigie Labour 01384 823432 07879 466987 CSSC, CSC	 Rachel Harris Labour 01902 490139 Cabinet
 Judy Foster Labour 07525 154493 Deputy Leader of the Council		
9 St James's	10 St Thomas's	11 B...
 Khurshid Ahmed Labour 07973 349632 Cabinet	 Asif Ahmed Labour 07787 157287 DC	 Cathryn Bayton Labour 07795 528821 Cabinet
 Steve Waltho Labour 01384 828448 07703 308463 OSMB, L&S	 Shaukat Ali Labour 07957 683696 CSC	 Shaneila Mughal Labour 07985 247857 OSMB (v/ch), A&S
 Bec Gentle Labour 07761 494627 CSSC, HASCSC, A&S		
13 Gornal	14 Upper Gornal & Woodsetton	15 B...
 Bryn Challoner Conservative 07540 004135 CSC, A&S	 David Stanley Conservative 01902 885533 07475 195090 HASCSC, PSC	 Anne Millward Conservative 01384 455107 07840 999117 CSSC (ch)
 Chris Neale Conservative 07970 821366 CSC, Tax	 Keiran Casey Labour 01384 342523 07800 792228 Cabinet	 Adam Aston Labour 01384 351109 07792 858961 A&S (ch), Tax
 Joe Roberts Conservative 07757 214599 CSSC, CSC, A&S		
17 Kingswinford North & Wall Heath	18 Kingswinford South	19 B...
 Ed Lawrence Conservative 07779 306712 CSC (v/ch), Tax	 Dave Tyler Labour 01384 292340 07759 209962 CSSC, CSC	 Nicola Richards Conservative 07808 281747
 Patrick Harley Conservative Group Leader 07976 757449	 Luke Johnson Conservative 07958 146166 HASCSC, PSC	 Peter Miller Conservative 01384 832118 07910 126757 HASCSC (v/ch), L&S
 Donna Harle Conservative 07955 111219 PSC, DC		
21 Quarry Bank & Dudley Wood	22 Norton	23 Ped...
 Chris Barnett Labour 07711 318447 CSSC, CSC	 Bryan Cotterill Labour 01902 883092 DC	 Jackie Cowell Labour 01384 839808 PSC, A&S, Tax
 Colin Elcock Conservative 01384 375275 07730 882877 L&S (ch), OSMB, DC	 Mike Attwood Labour 07817 735859	 Heather Rogers Independent 01384 824939 PSC
 Angus Lees Conservative 01384 390604 07812 113036 Shadow Cabinet		



4 Belle Vale

Vanessa Wale Labour 07783 131205 PSC	Mohammed Hanif Labour 01384 375998 07779 623975 OSMB, DC

4 Belle Vale

Jake Cooper Conservative 07970 821346 CSSC, PSC	Laura Taylor Conservative 07384 642477 Shadow Cabinet	Simon Phipps Conservative 07966 992147 Shadow Cabinet

8 Castle & Priory

John Martin Labour 07776 196900 Cabinet	Karen Jordan Labour 07973 143311

8 Castle & Priory

Alan Finch Labour 01902 679442 PSC (v/ch)	Margaret Aston Labour 01902 677475 PSC, Tax	Ken Finch Labour 01902 673451 L&S (v/ch)

11 Coseley East

Sue Ridney Labour 01902 404433 Cabinet	Melvyn Mottram JP Labour 01902 491641 07961 424425 HASCSC (ch)

12 Sedgley

Shaun Keasey Conservative 01902 269741 A&S, L&S	Michael Evans Conservative 01902 672903 A&S (v/ch), L&S	Tina Westwood Conservative 01384 826865 A&S

15 Halesowen North

Hilary Bills Labour Deputy Mayor 0121 422 2752 07713 636002 L&S	Karen Shakespeare Conservative 07973 376024 Shadow Cabinet

16 Halesowen South

Ray Burston Conservative 0121 585 7430 07596 606649 OSMB, DC	David Vickers Conservative Deputy Group Leader 0121 550 4814 07812 896528	Alan Taylor Conservative Mayor 0121 602 2023 07751 142396 L&S

19 Wordsley

Kerry Lewis Conservative 07949 750832 Tax (v/ch), CSSC	Matt Rogers Conservative 07929 251240 PSC (ch), OSMB

20 Netherton, Woodside & St Andrews

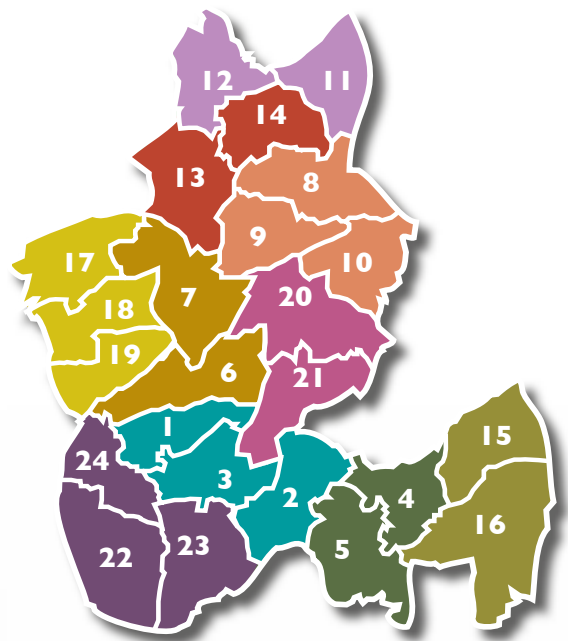
Elaine Taylor Labour 07982 233903 CSSC (v/ch), L&S	Christine Perks Labour 01384 259979 07988 011455 HASCSC, DC, L&S	Qadar Zada Labour 07305 552304 Cabinet

24 Wollaston & Stourbridge Town

Les Jones Conservative 01562 720499 07973 504376 OSMB	Ian Kettle Conservative 01384 392354 Shadow Cabinet

24 Wollaston & Stourbridge Town

Nicolas Barlow Conservative 01384 370710 07989 174153 Shadow Cabinet	Alan Hopwood Conservative 07792 523238 HASCSC, Tax (ch)	Steve Clark Conservative 07989 202808 Shadow Cabinet



Community forums

Amblecote, Cradley & Wollescote and Lye & Stourbridge North

- 1 Paul Bradley
- 1 Julie Baines
- 1 Simon Tyler
- 2 Tim Crumpton
- 2 Gaye Partridge
- 2 Richard Body
- 3 Pete Lowe
- 3 Vanessa Wale
- 3 Mohammed Hanif

Gornal and Upper Gornal & Woodsetton

- 13 Bryn Challenor
- 13 David Stanley
- 13 Anne Millward
- 14 Chris Neale
- 14 Keiran Casey
- 14 Adam Aston

Halesowen North and Halesowen South

- 15 Joe Roberts
- 15 Hilary Bills
- 15 Karen Shakespeare
- 16 Ray Burston
- 16 David Vickers
- 16 Alan Taylor

Belle Vale and Hayley Green & Cradley South

- 4 Jake Cooper
- 4 Laura Taylor
- 4 Simon Phipps
- 5 Andrea Goddard
- 5 Ruth Buttery
- 5 Jeff Hill

Kingswinford North & Wall Heath, Kingswinford South and Wordsley

- 17 Edward Lawrence
- 17 Dave Tyler
- 17 Nicola Richards
- 18 Patrick Harley
- 18 Luke Johnson
- 18 Peter Miller
- 19 Donna Harley
- 19 Kerry Lewis
- 19 Matt Rogers

Brierley Hill and Brockmoor & Pensnett

- 6 Zafar Islam
- 6 Serena Craigie
- 6 Rachel Harris
- 7 Judy Foster
- 7 John Martin
- 7 Karen Jordan

Netherton, Woodside & St Andrews and Quarry Bank & Dudley Wood

- 20 Elaine Taylor
- 20 Christine Perks
- 20 Qadar Zada
- 21 Chris Barnett
- 21 Bryan Cotterill
- 21 Jackie Cowell

Castle & Priory, St James's and St Thomas's

- 8 Alan Finch
- 8 Margaret Aston
- 8 Ken Finch
- 9 Khurshid Ahmed
- 9 Asif Ahmed
- 9 Cathryn Bayton
- 10 Steve Waltho
- 10 Shaukat Ali
- 10 Shanelia Mughal

Norton, Pedmore & Stourbridge East and Wollaston & Stourbridge Town

- 22 Colin Elcock
- 22 Mike Attwood
- 22 Heather Rogers
- 23 Angus Lees
- 23 Les Jones
- 23 Ian Kettle
- 24 Nicolas Barlow
- 24 Alan Hopwood
- 24 Steve Clark

Coseley East and Sedgley

- 11 Bec Gentle
- 11 Sue Ridney
- 11 Melvyn Mottram
- 12 Shaun Keasey
- 12 Michael Evans
- 12 Tina Westwood





THE WILLOWS

Middlepark Road, Dudley, DY1 2LD

A brand new development of **2, 3 and 4 bedroom homes** just 2 miles from the centre of Dudley.

Prices from **£149,500** and with Help to Buy* available, you could move in with just a **5% deposit**.

Marketing suite and showhome open
Thursday - Monday, 10am - 5pm.

01384 469899

keepmoat.com/thewillows



*Help to Buy scheme on selected plots and developments only, subject to terms and conditions. Cannot be used with any other offer. Help to Buy purchasers are required to fund at least 80% of the purchase price by means of a conventional mortgage, savings and any deposit where required. Eligible applicants will be offered an equity loan of up to 20% of the market price, interest free for the first five years. At the start of year six a fee of 1.75% is payable on the equity loan, which rises annually by RPI inflation plus 1%. The equity loan is held as a second charge on the property. Terms and conditions apply and full details will be provided on request. Please note Help to Buy charge £1 a month from outset as a management charge.

DON'T MISS HALESOWEN COLLEGE OPEN EVENTS 2018-2019

OCTOBER
15
Monday
5.30pm-7.30pm
2018

NOVEMBER
10
Saturday
10.00am-4.00pm
2018

JANUARY
26
Saturday
10.00am-2.00pm
2019

MARCH
20
Wednesday
5.30pm-7.30pm
2019

MAY
21
Tuesday
5.30pm-7.30pm
2019

To APPLY visit our website - www.halesowen.ac.uk

RoSPA Order of Distinction for housing maintenance

Dudley's housing maintenance service has been awarded an Order of Distinction in the RoSPA Health and Safety Awards in recognition of its practices and achievements in helping its staff to get home safely at the end of the working day.

The awards scheme, which receives entries from organisations around the world, recognises achievement in health and safety management systems, including practices such as leadership and workforce involvement.

Orders of Distinction are presented to organisations sustaining the high standards of the gold level over consecutive years

For more information about the RoSPA Awards visit: www.rospace.com/awards

Home contents insurance for Dudley Council tenants

If you lose the keys to your home it can be expensive to replace them and have new locks fitted.

However, tenants with Dudley Council's home contents insurance don't need to worry, because their policy covers the cost of new keys and locks if their keys are lost or stolen.

This is just one of the benefits that come as standard along with protection for your belongings against fire, theft and water damage. This also includes cover for items, which are rented or purchased on weekly payment schemes.

The policy is underwritten by Aviva Insurance Limited.

For more information or to apply today call 01384 815051 or visit dudley.gov.uk/homeinsurance



Downsizing in Kingswinford and Wall Heath

Council tenants living in family houses in the Kingswinford and Wall Heath areas are being given the opportunity to downsize to brand new one and two bedroom apartments.

For people living in a house that's too big for them to maintain, if children have left home leaving them with space they no longer need, or if they're struggling with the stairs, the garden, or the bills, then downsizing may offer a more manageable alternative.

The new apartments are in a three storey block with a lift, which is currently under construction in Beech Road. Some apartments also have full wet rooms suitable for tenants with disability needs.

The council has reserved some of these apartments for tenants who need to downsize within the local area. The scheme will enable those seeking to downsize to remain in their local area and benefit from living in modern, well designed properties, close to local amenities. Help may also be available with removal costs.

Tenants living on the New Farm estate in Stourbridge who are considering downsizing have a similar opportunity with a development of one and two bed bungalows under construction in Crowle Drive.

For further information please contact the housing liaison team on 0300 555 2345.

Government Building Safety Programme - fire doors in flats

Tenants living in a flat with a communal area, where the front door opens onto an enclosed communal area, should have a working self-closing device fitted to the door.

People who do not have a working self-closing device are asked to call the repairs management centre on 0300 555 8283 to request one to be fitted.

Fire doors are critical to most fire strategies for buildings but can only offer protection in limiting the spread of smoke and fire if the door seals are working effectively and if the door can fully close under the action of its self-closing device.

Mortgage support changes

Changes to the Support for Mortgage Interest scheme (SMI) came into effect on 6 April this year.

SMI provides help to eligible homeowners towards interest payments on a mortgage or loans taken out for certain home repairs and improvements.

Before April, SMI was paid in the form of a benefit. However, SMI is now paid as a loan and the loan is repaid with interest when the property is sold or ownership is transferred.

If you were receiving help in the form of benefit, you will now be offered a loan instead. If you have any further queries relating to SMI please contact support services on 01384 815035.

Support services also provide advice and support to homeowners on a broad range of issues including: change or impending change of circumstances such as loss of income, redundancy, bankruptcy, loss of partner, ill health, retirement or relationship breakdown; beneficial interest, legal rights relating to a property; charging orders and orders for sale; leasehold charges debt; interest only mortgage term ending; interest rate rises and mortgage arrears; possession proceedings; eviction; and endowment shortfall.

Right to Buy advice

The Citizens Advice service is now providing a new service about the financial responsibilities of home ownership for tenants who have applied to buy their home under Right to Buy.

The service includes a check of benefit entitlement in order to maximize income, help to draft a financial statement, and advice on the changes from tenant to homeowner.

Tenants who have applied to the scheme and have received an offer will be contacted with details about the service.

Leaseholder news

Contact details for Dudley Council leaseholders:

Repairs notification

If you have received a repairs notification, you can raise a query within 30 days. Please contact the repairs management centre on 0300 555 2345 for queries about when the job was completed, where the work was done and what was included in the job.

Invoice enquiry

For queries about charges on a recent invoice please contact the leaseholder team; north 01384 811659 or south 01384 815096.

Payment plans

To set up a payment plan contact the sundry debtors team on 01384 814941 or 814942.

Payment line

If you would like to make a payment on your bill please call 0300 555 7000.

Section 20 notice

The council has a responsibility to consult with leaseholders before starting any major works estimated to cost more than £250 per leaseholder, or long term agreements estimated to cost more than £100 per leaseholder in one year.

Consultation requires the council to serve notice on leaseholders with details of the intended works and the associated costs.

The costs for completed works are debited to each leaseholder's major repairs fund account and details are included in the annual statement.

For more information visit: www.dudley.gov.uk and search 'leaseholder information'.

Get involved with your TRA

Tenants and Residents Associations (TRAs) hold regular public meetings. The groups discuss many issues relating to their local community and make suggestions on how to make improvements. Being part of a community group can really help to tackle local issues. It's also a great way to get to know your neighbours. **For more information visit www.dudley.gov.uk and search 'getting involved', or contact the participation team on 01384 815168 or email participation@dudley.gov.uk**

BRIERLEY HILL CIVIC | FORTHCOMING EVENTS

CIVIC HALLOWEEN PARTY (over 18's) 2nd November	A TRIBUTE TO THE BEE GEES 3rd November
DOREEN'S BIG TOP COMEDY SHOW (over 16's) 6th & 7th November	MEAT LOAF TRIBUTE 9th November
90's BOY BAND SHOW + DJ until 1am (over 18's) 10th November	THE DREAMBOYS (over 18's) 14th November
PETER ANDRE UNSCRIPTED 15th November	GENESIS TRIBUTE 16th November
LIVE AT THE CIVIC COMEDY NIGHT (over 18's) 17th November	PINK TRIBUTE 22nd November
ULTIMATE SOUL & MOTOWN NIGHT (over 18's) 30th November & 29th December	CIRCUS OF HORRORS (over 16's) 1st December
CIVIC CHRISTMAS PARTIES (over 16's) Limited availability throughout December	CIVIC NEW YEAR'S EVE PARTY (over 18's) 31st December



**TO BOOK TICKETS VISIT
WWW.BHILLCIVIC.CO.UK
OR CALL 01384 573381**



CELEBRATING 35 YEARS DELIGHTING YOUR TASTE BUDS

Multi-Award-Winning Fish and Chips



NATIONAL FISH AND CHIP SHOP OF THE YEAR RUNNER-UP

CURRENT HOLDER OF THE EXPRESS AND STAR FISH AND CHIP SHOP OF THE YEAR AWARD



FOOD HYGIENE RATING

5

- Easy parking
- Battered or plain chips available
- Large orders catered for
- Oil purifying equipment in daily use
- Fresh fish from sustainable waters



COMING SOON... SUB STATION
OUR NEW SANDWICH BAR

NEW OPENING TIMES NOW OPEN ALL DAY!

Mon to Sat | 11.45am to 10.30pm
Sunday 4.30pm to 10.30pm

WHERE TO FIND US

7 Middlepark Road | Russells Hall
Dudley | DY1 2LW | 01384 254 835
Email: thebluesubmarine@hotmail.com



BLACK COUNTRY RADIO



VOLUNTEER WITH US!

Interested in getting involved with your local radio station?

We have lots of volunteering opportunities - are you interested in presenting, producing, news and journalism, promotions, fundraising or supporting the station behind the scenes?

Then visit blackcountryradio.co.uk/join-us or call 01384 887 554 and we'll be in touch!

Tara Whitehouse
FEMALE DRIVING INSTRUCTOR



STOURBRIDGE - DUDLEY
& SURROUNDING AREAS

£25.00
PER HOUR LESSON

BLOCK LESSONS

£115.00 **£220.00**
BLOCK OF 5 LESSONS BLOCK OF 10 LESSONS

To arrange a lesson call

07961 690585

tarawhitehouse12@icloud.com

**PROMOTING
THE
BLACK
COUNTRY**



BLACKCOUNTRYTSHIRTS.COM
257 CASTLE STREET, DUDLEY, DY1 1LQ

START

HERE

DON'T

STOP



Careers Guidance
Officers available

Please call for
an interview

Open days:

Saturday 20th October 2018 10am-2pm

Saturday 19th January 2019 10am-2pm

Saturday 16th March 2019 10am-2pm

Wednesday 12th June 2019 4pm - 7pm

01384 363 363 | dudleycol.ac.uk

Noticeboard

Houses for sale

The council is investing in a ground breaking initiative to build quality homes for private sale.

The first of these developments, built by local developer Jessup, is Wenlock Gate on Wren's Nest Road in Dudley, which will offer eight two-bedroom starter homes. Future sites include Mill Grange on Mere Road in Stourbridge, Red House Mews on Brettell Lane and King William Street in Amblecote, and Castle Court on Beechwood Road in Dudley.

For further details visit www.dudley.gov.uk and search 'private homes for sale' or contact the selling agents: for Wenlock Gate and Castle Court contact Billingham Taylor on 01384 234900; for Mill Grange and Red House Mews contact Lee Shaw on 01384 396066.



Sign up and take control

A new website has been launched by Dudley Council which has led to thousands more people viewing pages online.

The new site at www.dudley.gov.uk includes a new section for people to create personal accounts for them to pay bills, request services and report and track issues.

The account will give a secure, personal summary of all transactions with the council.

People need to click on register/sign in to create an account.

I am deaf

A new card is now available for deaf people in Dudley to let services know they need support with communication.

The card can be shown before health appointments to make sure the service is prepared and able to support the deaf person with an interpreter or communicate with them in a way that best suits them.

The card has been developed by Healthwatch Dudley and the Dudley Deaf Focus Group in collaboration with Dudley CCG, The Dudley Group NHS Foundation Trust and Dudley Council.

For a free I Am Deaf card, contact The Deaf Support Service - phone 01384 813462; Minicom 01384 230025; text 07779 434717; or email disabhearing.dachs@dudley.gov.uk



New carers hub opens in Dudley

The Dudley Carers Hub, run by Dudley Council, is a new one-stop shop providing support, advice and information to carers of all ages living in Dudley borough.

The service can help with financial and legal advice, emotional and wellbeing support, respite services and social groups. There is also specialist support for young carers and parent carers.

People can pop into the hub at the Queens Cross Network on Wellington Road in Dudley. Alternatively contact the service by phone on 01384 818723 or email carers.network@dudley.gov.uk



Fostering in Dudley

Could you help a child reach for the stars? Dudley Council is looking for new foster carers who can help children and young people achieve their full potential.

The service is keen to hear from anyone interested in fostering but in particular from those who would like to care for teenagers, children with disabilities or those who could take more than one child so that brothers and sisters can stay together.

Dudley fostering offers a range of fostering options, 24 hour support 365 days a year and comprehensive training and guidance.

For more information visit:
www.fosteringindudley.org.uk



Shared Lives support service

Shared Lives is an innovative alternative to residential or home care that provides support to adults with care needs within a family unit.

The scheme offers short breaks or long-term placements and has a great track record of enabling positive outcomes for people with a range of support needs.

The Dudley Shared Lives Service has recently transferred to a new provider, Camphill Village Trust (CVT), and the council will work closely with the trust to develop the service across all areas to include learning disabilities, older people and mental health.

For more information visit:
www.dudley.gov.uk and search 'Shared Lives',
telephone 01384 813252
or email dudleysharedlives@dudley.gov.uk



Free childcare for threes and fours

Working parents can now apply for up to 30 hours of free childcare and early learning during term time.

Currently, all three year olds are entitled to 15 hours of free childcare from the term after their third birthday. The new entitlement will allow parents to claim an additional 15 hours. To qualify, both parents must be working, or the sole parent must be working in a lone-parent family, and each parent must earn a minimum of the equivalent of 16 hours per week at the national living or minimum wage and less than £100,000 a year. If you are self-employed or on a zero-hours contract you can still be eligible.

For more information visit:
www.childcarechoices.gov.uk

Dudley Disability Service

A new service is now available in the borough that supports children, young people and adults with disabilities or special educational needs.

The Dudley Disability Service offers a range of care and support services and can also signpost to other services.

For more information contact the service on 01384 815813 or 01384 813252.



The E-Class range
now comes with
3 years free
servicing*



Don't miss out, visit us today or call us on 01384 936240

Mercedes-Benz of Stourbridge
St John's Road, Stourbridge, DY8 1ET
01384 936240

Lookers
for you, for life



*All E-Class models must be registered until 31 December 2018. Vehicles must be purchased on a MBFS finance contract to be eligible. Offer includes Mercedes-AMG models. Offer applies to all private retail and small fleet (1-24 units) customers only. ServiceCare Plan is based on 3 services taken at the relevant service intervals - either 15,500 miles or 12 months whichever comes sooner. All services must be completed by an authorised Mercedes-Benz Retailer. This offer can be used in conjunction with all other applicable Sales Campaigns except other ServiceCare campaigns. No cash alternative. ServiceCare plan stays with the vehicle and therefore in the event of change of vehicle ownership, the ServiceCare plan cannot be moved to another vehicle, but should be given to the new owner of the same vehicle. Mercedes-Benz Cars UK Limited reserves the right to amend or withdraw this campaign at any time.



Impact Surfacing

Resin Driveway Specialists

For all your driveway & landscaping solutions,
please call or visit our website

Tel: 01384 346 072

Mob: 07811 111583



email: tandhcrimes@gmail.com

www.impactdriveway.co.uk



Autumn/Winter 2018

Your borough

YOUR HOME

News and information for Dudley borough residents



Dudley
Metropolitan Borough Council

DUDLEY BOROUGH
A GREAT PLACE TO CALL HOME

FORGING
A FUTURE FOR ALL
IN DUDLEY BOROUGH
www.dudley.gov.uk

To advertise in the next edition
please contact **Mark Parker** on

01384 565646

POLAR CLEANING

Carpet & upholstery
cleaning, drive &
patio cleaning,
window cleaning,
conservatory cleaning,
gutter cleaning.

Tel: 01902 688668
Mobile: 07866 948618

Pharaoh Designs

Architectural plans for
extensions and
alterations.
Planning permission
and building
regulations.

25 years experience.

Tel: 01384 277200
info@pharaohdesigns.co.uk

C J GUEST TRANSPORT

House Clearance
Specialists.
Full Probate Service.
Removals.
Registered Waste Carrier.
Fully Insured.

Call now on
07788 784383
Tel: 01384 878705

HOUSEHOLD PLUMBING

All your plumbing
needs solved!

CIPHE registered
WRAS registered

Prices from £35

0121 602 6776
07968 786449
www.household-plumbing.co.uk

astral DIGITAL tv



Professional digital TV
& aerial installations.

Tel: 0121 423 3088
Mobile: 07957 107997
astradigitaltv@gmail.com
www.ariels-birmingham.com

GTS Windows

All types of windows &
doors. Composite &
bi-folds, porches,
conservatories, fascia &
guttering, replacement,
misted units, window &
door repairs.

Tel: 01384 566856
Mobile: 07788 974063
Drews Holloway, Halesowen
george.gtwindows@gmail.co.uk

Pricey's Window Cleaning

Windows, doors,
conservatories, fascias,
gutters and driveways.

Cleaning both inside
and outside.

Misted Unit Replacement.

Tel: 01384 381749
Mobile: 07967 326366

DUKES

Electrical Services

All domestic electrics
undertaken, fuseboards,
sockets, lights, garden
power, CCTV,
testing/fault finding,
NICEIC, part P.

Tel: 01384 353689
Mobile: 07811 212248

ELECTRIX
SERVICES LTD

All electrical work
undertaken. NICEIC
approved contractor.
NICEIC backed
guarantee.

Friendly fast service.

Tel: 01384 232772
Mobile: 07830 233420
www.electrixservices.co.uk

Sofa Tech (Dudley) Ltd

Upholsterer and furniture
repairs. Recovers, repairs,
broken frames, sagging
seats, leather repairs.



Tel: 01384 832292
Mobile: 07812 459539

MT SKIPS & GRAB HIRE

All sizes
skips and
all areas
covered.
Same day
delivery...
faster than a
phone call!!

Open 7 days a week.

SCRAP CARS REMOVED FOR FREE

07920 88 57 74
01384 24 09 56



The Shed Shop

Tel: 01384 482542
Mobile: 07920 885774
Paddys Wide Water Industrial Estate,
Pensnett Road, Brierley Hill, DY5 4AH.

Cavendish CLEANERS LTD

Free collection and
delivery of curtains.
Curtains taken down
and re-hung.
Dry cleaning and laundry.
Repairs and alterations.
Wedding Dresses Cleaned.

Tel: 01384 274848
Mobile: 07973 301957

CHANGING ROOMS DUDLEY LTD

Bathroom conversions,
easy access & assisted
bathing. Home
improvements &
alterations. 0% VAT in
qualifying cases.

Tel: 01902 670426
Mobile: 07973 421714
enquiries@changingrooms.org.uk
www.changingrooms.org.uk

To advertise
in this
section call
Mark Parker
on
01384 565646

PowerPlan

Preparation of plans and
associated documentation
for planning, building
Control and Water
Industry approvals.

Tel: 01384 833465
Mobile: 07900 525753
www.powerplan.design

Cleaning your bins until they sparkle



- Food remnants, including meat - raw & cooked
- Pet waste
- Soiled nappies
- Used tissues & other paper products
- Contents of your vacuum cleaner
- Non recyclable food packaging - takeaway food cartons etc
- Old newspapers & magazines where a recycling scheme is not in operation
- Garden waste



Before After

Call 078 2618 1966 or visit www.wheeliesparkling.co.uk

JS QUALITY ELECTRICAL SERVICES LTD

0121 531 6884 | 07753 393562

Re wire, fuse board upgrades, insurance reports, alarms, CCTV, security lights, new showers, extra sockets/lights.



www.jsqualityelectrical.co.uk
jselectricalservices@hotmail.co.uk

PROMARCO PROMOTIONS LTD

Bus, Trailer & Stage Hire

We can offer a variety of exhibition stage units to suit your requirements...

Promarco have a wealth of experience in developing and organising Tours, Campaigns and Fun Day Events.

Perfect for:

- Roadshows • Public Consultations • Product Promotions
- Fun Days • Festivals • Christmas Light Switch On's

For more details contact Promarco on 01384 565646



GOT PESTS?

Then call in your local Experts.

Whatever the **PEST** ...call the **BEST!**

SSE PEST CONTROL
01384 935 002




Fibreglass flat roofing in the West Midlands

Diamond Fibreglass we pride ourselves on quality and customer care.

"We aim to give you the best price we can offer, providing the best value for money!"



Before After

"We can replace your old worn out flat roof covering and replace it with a new modern roof covering that will last a life time.

We specialise in Fibreglass Flat roofing. We have spent many years in the Fibreglass Industry. Giving you trust in what we do best! I have worked in the Fibreglass industry for the last 17 years."

25 YEAR COMPANY GUARANTEE
10 YEAR INSURANCE BACKED GUARANTEE
10% OFF WITH CODE DUDLEYMBC
 FREE QUOTATIONS AND WRITTEN ESTIMATES
 T: 07969 543 566 www.diamondfibreglass.co.uk



NATURAL STONE SUPPLIES LTD

Visit our Fireplace showroom today!
 Tel: 01384 571100 ■ Open MONDAY-SATURDAY
www.naturalstonesuppliesltd.co.uk

THE LARGEST SELECTION OF NATURAL STONE, GARDEN & LANDSCAPE PRODUCTS

DELIVERY SERVICE / CUTTING SERVICE FOR BRICKS, BLOCKS AND SLABS
 FREE QUOTES ■ DISABLED ACCESS ■ FREE PARKING

Full Landscape Design & Installation service

- Paving - See our displays ■ Walling ■ Rockery (large pcs) ■ Decorative gravel
- Pebbles ■ Granite Setts ■ Glacial Cobbles ■ Slate Chippings ■ Carved Troughs
- Slate Monoliths ■ Polished Black Pebbles ■ Pebblestone
- Crazy Paving & Much More ■ All at unbeatable prices

WOODSIDE WORKS, PEDMORE ROAD, DUDLEY, DY2 0RL

What's on

There's lots happening across the borough...

To find out more visit www.discoverdudleyevents.co.uk

Himley Hall & Park

www.himleyhallandpark.co.uk

- **Celebrating Heroes**
Himley bonfire and fireworks
Saturday 3 November 2018
Gates open: 4.30pm Fireworks: 8.30pm
Save up to 20% by booking online at:
www.himleyhallandpark.co.uk

Forthcoming highlights from Borough Halls

For a complete listing of programmes visit:
www.boroughhalls.co.uk or call the box
office on **01384 812812**

Dudley Town Hall

- **Magic of the Musicals**
Tuesday 11 December
- **The Bohemians (Queen Tribute)**
Friday 1 February
- **Nish Kumar**
Friday 15 February
- **The Billy Fury Story**
Saturday 16 February
- **Psychic Sally Morgan**
Thursday 28 February
- **Jason Manford**
Saturday 9 March
- **Sing-a-Long-a Sound of Music**
Friday 15 March
- **Opera Boys**
Thursday 23 May
- **The Drifters**
Saturday 5 October

Stourbridge Town Hall

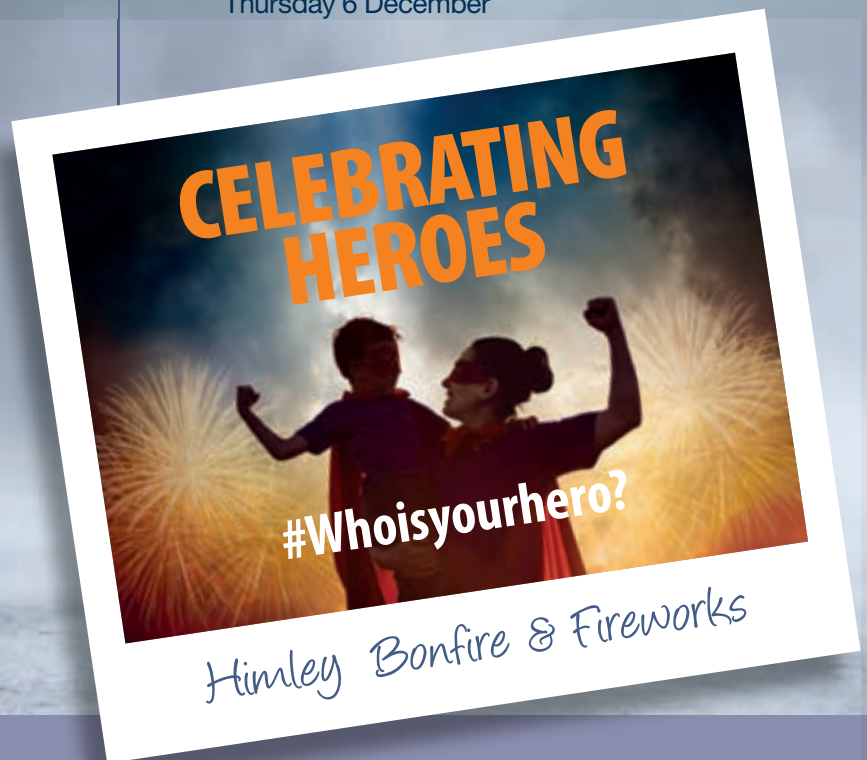
- **Ballet Cymru presents Cinderella**
Saturday 8 December
- **Sing-a-Long-a Frozen**
Saturday 15 December

Monday Movie Matinees

- **Journey's End**
Monday 5 November
- **The Bromley Boys**
Monday 19 November
- **The Happy Prince**
Monday 3 December
- **The Bookshop**
Monday 17 December

Kum-n-avaloff

- **Monthly Comedy Nights**
Thursday 1 November
Thursday 6 December



This publication is available in
large print and audio. To request
a copy phone 01384 813400.

Produced by Dudley Council.

Dudley Council does not accept any responsibility for or endorse any
products or services offered by advertisers.

All information correct at time of printing.

BRIERLEY HOP HOUSE

THE WATERFRONT | LEVEL STREET | BRIERLEY HILL | DY5 1XD

BEERS | BURGERS | COCKTAILS

Formerly the Brewers Wharf, this large canalside pub has recently undergone a profound transformation in both name and nature. Now called the "**Brierley Hop House**", this is a trendy wet-led establishment with dim lighting and plenty of hideaways to enjoy a drink with friends or to mark a special occasion.

Brierley Hop House is an all-encompassing Black Country Pub. Home to the famous Bostin Quench, the views are something to be seen with a full gin and cocktail menu in addition to the large range of keg and cask products. With quaint but quirky corners, a good selection of ales, classy cocktails and good pub grub you can't go far wrong.

Weekly entertainment is hosted with a function room for private hire - so all in all why not pop on down to the "**Hop House**" and grab yourself an ale in this Cask Marque Accredited pub. Hosting all occasions bring along your family, friends or even just yourself.



CALL 01384 483 522 | WWW.BRIERLEYHOPHOUSE.CO.UK

 WWW.FACEBOOK.COM/BRIERLEYHOPHOUSE



BLACK COUNTRY RADIO

Your local award winning station.
Great music, the latest local news, sports, travel,
interviews and much, much more.
Everything you need to know about the
Black Country in one place.

**BROADCASTING ACROSS THE
BLACK COUNTRY
102.5 FM • ONLINE**

  @wearebcr    

blackcountryradio.co.uk

Never miss a show - listen again via our website



Bronze winner for Sport Show of the Year 2018
Nominated for Best Male Presenter 2018

